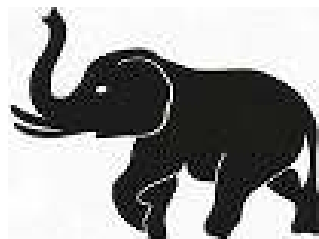




2023
SOUTH AFRICAN
SHORE ANGLING ASSOCIATION
SENIOR A CHAMPIONSHIP



EASTERN PROVINCE
SHORE ANGLING ASSOCIATION



SASACC



SHORE ANGLING



**SUID AFRIKAANSE
KUSHENGEL ASSOSIASIE**

President: Gus Kaltenbrun

✉ gus@mambakofi.co.za

☎ +27 83 448 5637



**SOUTH AFRICAN SHORE
ANGLING ASSOCIATION**

Secretary: Andre Stevens

✉ sasaasecretary@gmail.com

☎ +27 84 422 7256

Welcome 2022 / 2023 Nationals

Dear Anglers and Officials

It is with great pride and pleasure to announce the restart of our Nationals in 2022 / 2023 where our top anglers proudly represent their Association and Clubs.

We as SASAA congratulate all participating Anglers and Reserves on your selection. We further thank all host Association's Exco's, team managers, weigh officials and guides for your time, dedication, and commitment to make our sport possible. We thank our Secretary Andre Stevens for ensuring as always that all arrangements are taken care of and are to the highest standard.

For the Anglers we know and understand that it takes much hard work, honesty, dedication, and perseverance to realize your ambition to represent your Association. It must however be underlined that it is imperative that you always hold your heads up high, win or lose and in doing so keep your integrity intact.

We wish the Anglers that excel in the Nationals that go on to represent South Africa and our Presidents teams all the best and congratulations. Those Anglers that miss the cut hold your head high and fish harder your turn will come.

All the best and Tight Lines.

Yours in Angling.



Gus Kaltenbrun
SASAA President



SASACC



SHORE ANGLING



**CHAIRMAN**

R. RAUTENBACH

☎ 082 572 3620

✉ raute.rautenbach01@gmail.com**SECRETARY**

A. STEVENS

☎ 084 422 7256

✉ andre.stormer@gmail.com**CHAIRMAN'S WELCOME: 2023 MASTERS TOURNAMENT:**

Welcome once again to the Eastern Cape with its beautiful beaches and promise of good catches under the right conditions. We are honoured to host the 2023 Senior A Nationals and we trust that the event would be a truly memorable one.

The Senior A Division is a fiercely contested tournament and features many of our angling greats who continue to show their capabilities. Enjoy the Eastern Cape, fish to the very best of your abilities and let us come the true realisation of how blessed we are to enjoy this sport and the playing fields we have been given.

So tight lines, do your best, make good friends and learn more and may the best win. Good luck to all, be safe and God Bless!

Tight lines

Yours in shore angling



Rautie Rautenbach
EPSAA Chairman



SASACC



SHORE ANGLING



TOURNAMENT INFORMATION PAGE:

Tournament Convener

Andre Stevens

084 422 7256

IMPORTANT NOTES

1. The first Captains meeting will take place on Saturday 18th February 2023 at 15:00 in the Marina Centre Hall, Gate 1 – South, Dolphin Drive, Marina Martinique, Jeffreys Bay.
2. The ADM will take place on Sunday 19th February 2023 at 15:00 in the Marina Centre Hall, Gate 1 – South, Dolphin Drive, Marina Martinique, Jeffreys Bay.
3. The opening & closing functions will take place at the Newton Hall, 17 Goedehoop Street, Jeffreys Bay.
4. Daily Captains meetings will be at a venue as decided for the day.
5. Roll Call +- 05h00 could change dependant on travel distance to the area decided for the day.
6. Bait issue will be at Angling & Marine Connection.
7. Scales close at a venue to be agreed at Captains meeting.
8. Excess bait may NOT be disposed of at the beach and refuse must be brought back from the beach for disposal in a skip which be provided.
9. The SASAA scoring system will apply.



SASACC



SHORE ANGLING



PROGRAM:**ANGLING DAYS WILL CHANGE:****DUE TO THE REST DAY THAT WILL BE DECIDED AT THE CAPTAINS MEETING.**

Saturday	18th Feb 2023	15H00	Captains meeting @ the Marina Martinique.
Sunday	19th Feb 2023	15H00 17H00 19H00	Divisional meeting @ the Marina Martinique. Bait issue @ Angling & Marine Connection. Welcoming function @ the Newton Hall.
Monday	20th Feb 2023	05H00 06H30 14H30 16H00 19H00	Roll call Lines-in Lines-up Scales close / Captains meeting Bait issue @ Angling & Marine Connection
Tuesday	21st Feb 2023	05H00 06H30 14H30 16H00 19H00	Roll call Lines-in Lines-up Scales close / Captains meeting Bait issue @ Angling & Marine Connection.
Wednesday	22nd Feb 2023	05H00 06H30 14H30 16H00 19H00	Roll call Lines-in Lines-up Scales close / Captains meeting Bait issue @ Angling & Marine Connection.
Thursday	23rd Feb 2023	05H00 06H30 14H30 16H00 19H00	Roll call Lines-in Lines-up Scales close / Captains meeting Bait issue @ Angling & Marine Connection.
Friday	24th Feb 2023	05:00 06:30 13:30 15:00 17:00 18:00 19:00	Roll call Lines-in Lines-up Scales close Sign off points Selectors Meeting @ the Newton Hall. Prize Giving @ the Newton Hall.

TIDES

DAY	HIGH	LOW	HIGH
Mon 20 th Feb 2023	04:01	10:07	16:14
Tue 21 st Feb 2023	04:37	10:43	16:49
Wed 22 nd Feb 2023	05:11	11:17	17:23
Thu 23 rd Feb 2023	05:44	11:50	17:54
Fri 24 th Feb 2023	06:16	12:22	18:25

**SASACC****SHORE ANGLING**

AREAS:

PRACTICE AREA: **Start of the rocks at Kabeljous to Seekoei River**
(Excluding the swimming beach at Jeffrey's Bay)



PROPOSED AREAS:

Van der Riets - Sundays River to the Sand Stone area



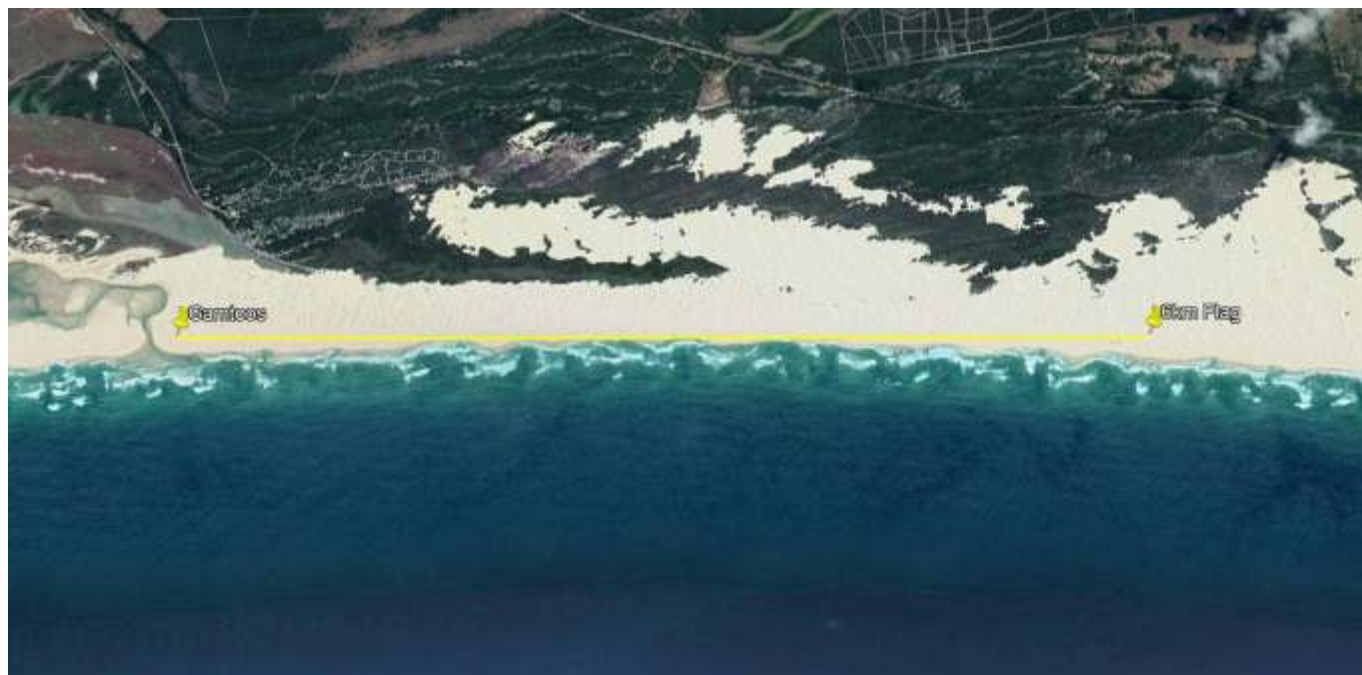
SASACC



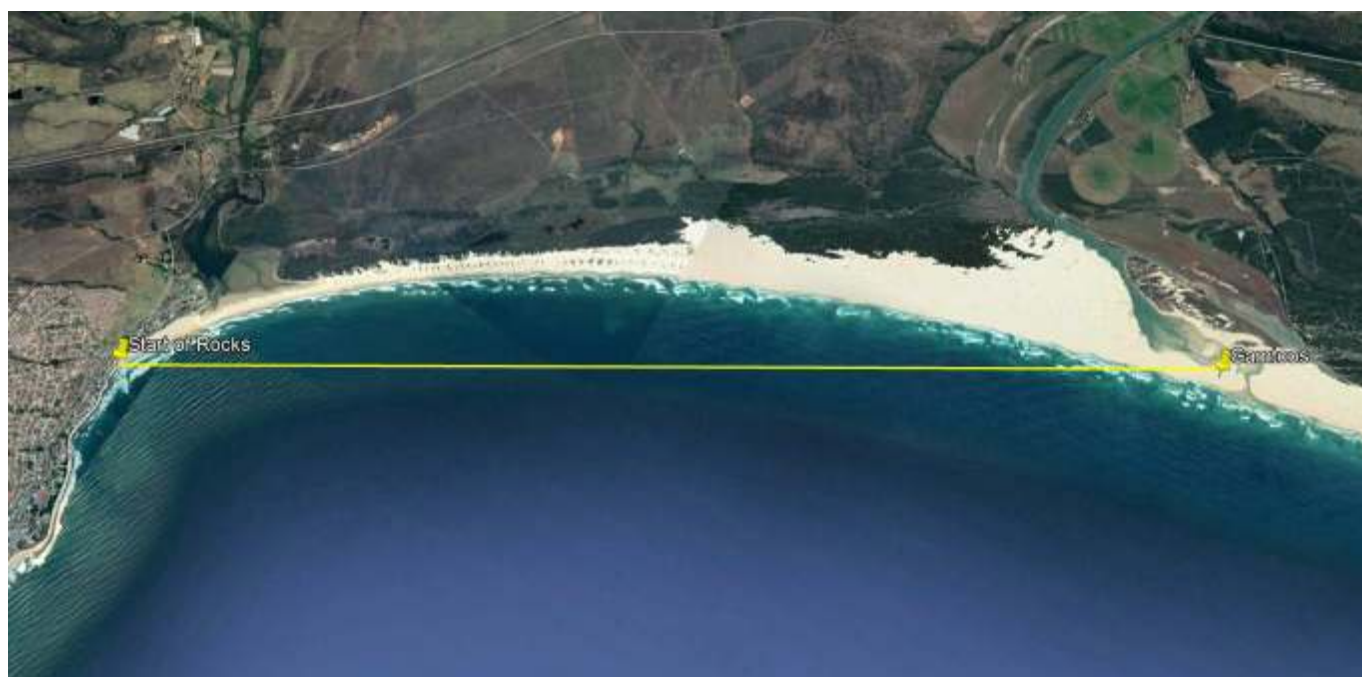
SHORE ANGLING



Gamtoos River – Gamtoos River mouth to the Flag



Kabeljous - Gamtoos River to start of the rocks at Kabeljous



SASACC



SHORE ANGLING



Paradise Beach - Seekoei River to Krom River



SASACC



SHORE ANGLING



TEAMS:**BOLAND**

TOP L to R: C. MARAIS, PJ MONG, J. MALHERBE, R. VAN ZYL, R. PAINCZYK, A. VAN ZYL.
 MIDDLE L to R: E. DIEN, L. BREDELL, W. KIRSTEN, P. MALHERBE, F. GROENEWALD, Z. MOSTERT.
 BOTTOM L to R: C. GROENEWALD, J. VAN DER WESTHUIZEN, J. HURTER.

BORDER

BACK L to R: D TESMER, C OPPERMAN, B YOUNG, S MCGREGOR, S RHEEDER, G LEACH (Manager), G BROWN (Reserve).
 FRONT L to R: C GENDALL, D BEZUIDENHOUT, D KURZ, K EDWARDS, G SHOUGH, L ROOS (Reserve).
 INSERT L to R: T KRAAI, D PEINKE, T DU PLESSIS (Guide), J KRUUSE (Manager), R. GOLDSMITH (Captain).

SASACC

SHORE ANGLING



CENTRAL GAUTENG		
MANAGER	Dirk Lucas	
COACH	Orton Gervais	
GUIDE	Abe van der Poel	
ANGLERS	S12101	Heino Welgemoed
	SA5326	Thinus Van Staden
	SA2371	Brandon Du Plessis
	SA9800	Chris Knoesen
	SA1009	Deon Eksteen
	SA8829	Dhires Dasrath
	SA5282	Kumesh Naidoo
	SA8201	Myuran Moodley
	SA8871	Ruan Nell
	SA8847	Shalvin Naidoo
	SA9770	Thomas Knoesen
	SA8863	Wouter Ludeke

EASTERN PROVINCE



BACK L to R: NEIL VAN DER LINDE, JOSHUA TIMM, ANDREW MYERS, DUVAN VAN BRED, GERHARD GUSE (Guide), JODY HARDIMAN, MAARTEN MOLENAAR (Manager), GARY STEVENS (Coach), CALLIE VILJOEN.

FRONT L to R: STEPHAN FERREIRA, KYLE HEWETT, JARRED VAN NIEKERK, PREVASHAN MOODLEY, WESLEY RENKEN, RIAAN VAN DER MERWE.

ABSENT: DARREN GOOSEN.



SASACC



SHORE ANGLING



EDEN



BACK L to R: N. DE JAGER, A. WOOD, B. FUCHS, E. BURGER, H. GOSSMAN, J. GOVENDER, W. RAPSON.
FRONT L to R: H. LESCH, F. MARAIS, R. POTGIETER, P. MULLER, M. SUMNER, R. WESTRAAT, H. COERTZE,
S. VAN HUYSSTEEN

FREE STATE



L to R: LEWIS CHETTY, JB THERON, LOUIS-HAN NEL, EUGENE STEPHEN, CHRISTOPHER ROTHMANN,
KEITH MUDRAY, EDUAN MOSTERT, PHILLIP VAN WYK, KESAVAN NAIDOO, WIHAN DE JAGER,
ADRIAAN VAN HEERDEN



SASACC



SHORE ANGLING



GAUTENG NORTH



TOP L to R: WIMPIE BARNARD, PHILLIP BARNARD, JOHAN KRUGER, RIAAN DIEDERICKS, BRITZ THERON.
MIDDLE L to R: STEYN VAN ZYL, GARETH DELL, FRIKKIE DE KLERK, JEAN COETZEE, LESTER ALEXANDER.
BOTTOM L to R: JONATHAN HANCOCK, HENDRE FRAZER, THEO HERBST (Coach), STEPHEN BEHR (Guide).

KWAZULU NATAL COAST



BACK L-R: Zahed Moosa, Azghar Sheik, Pieter Noeth, Jaodan Arlow, Niven Subbadu, Kishanth Ramsoorooj, Shannon Govender.
FRONT L-R: Jacques Venter, Sun Desh Pursad (Manager), Krish Naidoo (KZNCAU), Kevin Cowan (KZNCAU President),
Alex Skosana (KZNESC), Byron Bennett, Juan Dixon, Benedict Pillay.
Insert: Larusan Pillay.



SASACC



SHORE ANGLING



KWAZULU NATAL INLAND		
MANAGER	Corrie Groenewald	
COACH	Greg Sutherland	
GUIDE	Paul Loomes	
	SA3280	Louis Allison
	SA3368	Mike Karon
	SA9445	Wesley Peens
	SA0658	Morgan Lynch
	SA3984	Dion Govinder
	SA4077	Llyod Laxton
	SA3370	Daryl Mckenzie
	SA9802	James Turner
	SA3212	Gus Kaltenbrun
	SA1453	Rob Kyle
	SA9735	Dave Oelofse
	SA3572	Blane Wareham

WEST COAST SHORE ANGLING SENIOR A TEAM 2022/23



BACK ROW LEFT TO RIGHT: Charl Engelbrecht, Jurie Oosthuizen, Tersius Theart, Mauritz Viljoen

Hedley Engelbrecht (Manager), Renier Karsten, Brendan Joubert

FRONT ROW LEFT TO RIGHT: Gary Engelbrecht, Clinton Van Rensburg

INSERTS: Top Left - Russell Barclay (Coach) Bottom Left - Roland Randall

Top Right - Byron Keys (Captain), Bottom Right - Bruce Barclay (Guide)

ABSENT: Albert Thurling



SASACC



SHORE ANGLING



WESTERN CAPE



BACK L-R: Marc Christians, Chris Bester, Shahiem Adams, Chad Adams, Andre de Villiers, Gerhard Peter.
 FRONT L-R: Rudi du Toit, Ethan Woodman, Azmie Osman (Mngr.), Adiel Behardien (Mngr.), Ashley Campher, Leonard Engelke.
 INSERT T-B: Mike Bailey (Guide), Don van Blommestein, Gareth Dahl and Dale Gouveris (Guide).

Zululand A Team Nationals 2023 Jeffreys Bay



TOP LEFT: Colin Scheepers (Coach), André Poissat (Guide), Dean Reddy (Captain), Philip Andrews (Manager), Ryan Scheepers.
 MIDDLE LEFT: Keygan Moodley, Robert Reynald, Ruaan Scheepers, Alex Claassen, Kewin Govinder.
 BOTTOM LEFT: Lynton Premall, Xander de Beer, André Coetser, Chris Visagie, Juandre Lotriet.



SASACC



SHORE ANGLING





SASAA Championship Arrangements and Angling Rules.

GOVERNING ANY CHAMPIONSHIP OR INTER-REGIONAL SHORE ANGLING COMPETITION UNDER THE AUSPICES OF THE SOUTH AFRICAN SHORE ANGLING ASSOCIATION (SASAA).

Index

- B.1 INTRODUCTION.
- B.2 CHAMPIONSHIP AND GENERAL ORGANIZATIONAL DETAILS.
- B.3 CAPTAINS / MANAGERS MEETING.
- B.4 POWERS OF THE CAPTAINS/ MANAGERS MEETING.
- B.5 POINTS SCORING SYSTEM.
- B.6 CHAMPIONSHIP ANGLING RULES.
- B.7 WEIGHING OF FISH.
- B.8 OBJECTIONS AND COMPLAINTS.
- B.9 TROPHIES.

B.1 INTRODUCTION.

These are the official Shore Angling arrangements and rules as sanctioned for use during any SASAA Championship event. These Championship rules shall apply unless altered in terms of clause 3.2.1 (f) of the SASAA Constitution by a two third majority at a SASAA AGM.

B.2 CHAMPIONSHIP AND GENERAL ORGANIZATIONAL DETAILS.

- a) The respective dates and venues for all SASAA Championships shall be confirmed at the preceding SASAA AGM.
- b) Each Member Association shall confirm in writing to the SASAA Secretary their intention to participate, within 30 days after receipt of the official Championship invitation.
- c) SASAA must obtain quotations and host Associations will be advised accordingly who to procure the bait requirements from for the various championships.

B.2.2 CHAMPIONSHIP ARRANGEMENTS:

The host Association shall confirm the following detailed arrangements to all Member Associations at least six (6) months prior to the date of the Championship or within 21 days of the SASAA AGM:

- a) The Championship's fixed details (venue, dates, etc.)
- b) The proposed bait allocations.
- c) SASAA format budget reflecting detailed estimated costs per participating team.
- d) The angling practise area.
- e) Propose a minimum of three (3) areas as angling venues.
(Even if these venues are not selected at first Captains/Managers meeting, they may not be fished by team members as they might be selected at a subsequent Captains/Managers meeting should adverse weather and/or sea conditions prevail in one of the areas).
- f) Provide a list of guides available to assist participating teams.
- g) Options and costs for accommodation.
- h) Obtain relevant details required for Beach vehicle permit applications.
- i) Team registration and payment:
 - i) Advise registration and non-refundable 50% deposit payment date (90 days prior to commencement of the tournament).
 - ii) Advise balance payment date (30 days prior to commencement of the tournament).



SASACC



SHORE ANGLING



B.2.3. QUALIFICATION.

Each Member Association will be entitled to enter a team/s consisting of registered individual members of SASAA and their affiliated Associations, duly eligible to represent their association at, and participate in the Championships. (Guides and Captains excluded).

B.2.4. VEHICLES, DISABILITY AND INJURY:

(a) Vehicles:

No additional support vehicles will be allowed during championship hours.

(b) Disability:

An angler suffering a permanent disability may apply to the Executive Committee for permission to use a harness. The application must be accompanied by a letter describing the disability and signed by the Chairperson/President of his Member Association.

i) Class A disability:

A person who is disabled to the extent that they will not be able to participate without additional human assistance. **“An Assistant”**.

ii) Class B Disability:

A person who is disabled to the extent that they will not be able to participate without the assistance of manmade/manufactured ancillary equipment.

iii) Exemption Applications:

In both cases, the Association, deciding to select a disabled person, class A or B, to their representative team must:

- Apply to the Excom in writing for the appropriate exemption, stating the nature of the disability and providing the required substantiating medical certificates.
- Should the application be approved:

For class A:

The specific association will be allowed to have one (1) additional team member, **“An Assistant”**, in the designated competition area for the duration of each competition day of the tournament.

For class B:

The specific individual will be allowed to utilise the approved manmade/manufactured ancillary equipment for the duration of each competition day of the tournament.

Any additional costs that are required to facilitate participation will be borne by either the disabled member and/or his association.

c) Injury:

Should an angler be injured during competition hours he may be replaced, provided his weigh card has been handed in and signed off by the Tournament Co-ordinator. The replacement angler may commence angling immediately afterwards. A medical certificate will not be required.



SASACC



SHORE ANGLING



B.3. CAPTAIN'S / MANAGER'S MEETING.

a) Captains / Managers meetings are held on:

1. The Captains / Managers meeting for the Senior A Nationals is to be held on the Saturday, two (2) days prior to commencement of the SASAA Championship, at a venue and time stipulated by the host Association.
2. The Captains / Managers meeting for all other Nationals will be held one (1) day prior to commencement of the SASAA Championship, at a venue and time stipulated by the host Association.
3. On completion of each competition day at a venue and time, as agreed upon at roll call.
4. The Team Manager of the host association or his nominee shall act as Championship Coordinator and shall chair the Captain / Managers meeting. The SASAA President or his nominee may assist the Chairperson at all Captains / Managers meeting.
5. Select a Tournament Action Committee, consisting of the SASAA representative plus 2 additional members. Two (2) reserve committee members will be selected. Should any of the 1st or 2nd selected members or their associations be involved, implicated in an objection they will be replaced by the reserve members.

b) Captains/ Managers Meetings may only be attended by:

1. Member Associations Team Captain and Manager (Only two members per Member Association)
2. Tournament officials, for administrative purposes only, as well as Weigh Officials
3. The SASAA President and related SASAA Executive members.
4. Guides may accompany these officials to assist them with advice but may not address the meeting or participate in any discussions or decision-making.

B.4 POWERS OF THE CAPTAINS/ MANAGERS MEETING.

The first Captains / Managers meeting:

1. To decide on the angling areas for all competition days, accurately defined by GPS co-ordinates. The Host Association will be responsible for a well-researched and properly motivated proposal. Provision should be made for Reserve Areas that could be utilised in the event of adverse weather and/or sea conditions.
2. To decide on the championship angling hours for all days.
3. To decide on the Roll call venue and time for all days.
4. To decide on the venue and times for weigh in and scales close.
5. To make bait arrangements.
6. To make transport and/or travel arrangements.
7. Reach agreement on the exclusion/ inclusion of fish species.
8. Discuss/ implement any possible Nature/Coastal/Marine Conservation matters.
9. To attain consensus on all decisions.
10. To decide where gaffing of fish will be permitted.

Subsequent Captains / Managers meetings:

1. To address any problems that may have arisen during the course of the competition day.
2. To decide on the angling area in the event of drastic weather or sea conditions change.



SASACC



SHORE ANGLING



B.5 POINTS SCORING SYSTEM.

1. Each angler's individual catch must be recorded separately on the official score card, reflecting the anglers name, SASAA number and the Association he represents.
2. Each catch must be recorded and certified before an angler may resume angling.
3. All catches must be measured in accordance with the methods as prescribed in the SASAA approved tables. Measurements must be made using sticks or pegs and a tape measure exceeding the length of the fish, as approved by the Senior Official. The length measured will be the shortest straight-line distance between the snout and the pre-caudal notch, fork length or total length for sharks and fish or disk width for skates and rays. Every attempt must be made to minimize the time that the catch is removed from the water and all catches must be returned to the water with the least possible trauma.
4. All measurements to be converted to mass for the purpose of calculating weight-points.
5. All measurements shall be rounded off to the lowest centimetre. Example, 80.6 cm = 80cm.
6. Edible fish imply all fish except Toby's, Sharks, Rays, Skates, Sawfish and Sand sharks.
7. Minimum qualifying weight for edible fish will be five hundred (500) grams. Points shall be awarded on the base of two (2) points per kilogram and shall be calculated to a portion of a point.
Eg: 750g = 1.5 points or 1,6 kg = 3,2 points
8. Minimum qualifying weight for Non-edible fish will be one (1) kilogram. Points shall be awarded on the base of one (1) point per kilogram and shall be calculated to a portion of a point. Eg: 13.5 kg = 13,5 points
9. In the event of two or more teams or anglers having the same score in any competition, the team or angler with the greatest number of fish shall be the winner.
10. In the event of more than one team or angler catching the same number of fish in any competition, the one with the highest mass score, shall be the winner.
11. In the event of a tie in respect of both mass score and number of fish, such teams or anglers shall be the joint winners.
12. Scorecards must be handed to the designated or nominated person as soon as possible but not later than 90 minutes, or later if so decided at the first captain's meeting, after lines-up.
13. Once scorecards are handed to the designated or nominated person it will constitute competition closure for the specific team.
14. Scorecards handed in after scales close without prior notification to the Competition Secretary will not be considered for scoring towards the teams(s) Should a team not be able to submit their cards due to an accident, fighting a fish after lines up B.6.5 (e), or reasons beyond their control, then they must inform the Competition Secretary without delay. Each incident will be dealt with on its own merits by the Tournament Action Committee who must decide whether the scorecards will be considered for scoring, or not, toward the team(s) and or the individual(s) effected by the late handing in of the scorecards.
15. A list of all members allowed to witness will be drawn up and at data capture time the witness must be confirmed to be appear on the list.
16. Two weigh cards per team will be checked on a daily basis by confirming with the witness that he/she actually did witness the catch.
17. Any suspicious looking weigh also to be checked as per point 16 above.



SASACC



SHORE ANGLING



B.6 RULES

B.6.1 General Aspects.

- a. The area to be fished on any angling day shall be:

(1) Senior A and Senior B / Development National Divisions:

- a) Multiple entry points:
 - Maximum continuous area from East to West of 16 km – min 6 km.
 - Not more than 6 km away from any entry point.
 - Swimming beaches or no fishing areas are included in the total area of 16 km.
- b) Single entry point (access in both directions):
 - Maximum total fishing area of 8 km East to West.
 - Not more than 6km in any one direction away from the entry point.
 - Swimming beaches or no fishing areas are included in the total area of 8 km.
- c) Single entry point (access in one direction only):
 - Maximum fishing area of 6 km.

(2) Ladies, Junior and Masters Divisions:

- a) Multiple entry points:
 - Maximum continuous area from East to West of 8 km – min 4 km.
 - Not more than 6km away from any entry point.
 - Swimming beaches or no fishing areas are included in the total area of 8 km.
- b) Single entry point (access in both directions):
 - Maximum total fishing area of 8km East to West.
 - Not more than 6km in any one direction away from the entry point.
 - Swimming beaches or no fishing areas are included in the total area of 8km.
- c) Single entry point (access in one direction only):
 - Maximum fishing area of 6km.

(3) Grand Masters Division:

- a) Multiple entry points:
 - Maximum continuous area from East to West of 4km – min 2km.
 - Not more than 2km away from any entry point.
 - Swimming beaches or no fishing areas are included in the total area of 4km.
- b) Single entry point (access in both directions):
 - Maximum total fishing area of 4km East to West.
 - Not more than 4km in any one direction away from the entry point.
 - Swimming beaches or no fishing areas are included in the total area of 4km.
- c) Single entry point (access in one direction only):
 - Maximum fishing area of 4km.

Note: In the event of beach permits being obtained for vehicle access in fishing areas, the total maximum fishing area for any of the above divisions will be permitted.

- b. The host Association shall ensure that no local competitions are convened in any of the areas that have been demarcated for the Championship, for a period of 7 days prior to the Championship commencement date. No member of any participating team may fish in any of the areas that have been demarcated for the Championship, for a period of 72 hours prior to the Championship commencement date.
- c. All forms of electronic communication are allowed.
- d. The regulations of the Chief Directorate: Marine and Coastal Management will apply ipso facto Species listed as endangered or, for which a closed season is stipulated in the Regulations (MLRA), shall not count in any Championship. Catches smaller than the stipulated minimum legal size, may be measured and released without harm. Providing these catches comply with the Championship minimum weight requirement, they shall qualify to score.
- e. No catch may be retained, for any purpose during a Championship. Should the release of a catch not be successful, it shall be removed from the area and disposed of.



B.6.2 Terminal Fishing Tackle.

- a. An angler may not use more than one rod, reel and line at any given time.
- b. There shall be no restrictions on the diameter of monofilament line, the breaking strain of braided line, or the diameter, breaking strain or length of any shock leader, except for the restriction in B.6.6.c below. (Note Sec B.6.6 LANDING OF FISH in respect of 9 meter leader where an angler requires assistance to land fish).
- c. No more than two single or one treble hook may be used for bait casting.
- d. The use of boats, paddle-ski's, kites, wave propelling or other devices, balloons or bungs and/or corks exceeding 64 cubic centimetres is prohibited. eg: 40 x 40 x 40 mm

B.6.3 BAIT ASPECTS.

- a. No ground baiting shall be allowed before commencement of the Championship.
- b. Only bait issued to the angler may be used. The use of live/ fresh bait shall not be permitted.
- c. No dispersible additives may be used.
- d. Bait may only be cast by means of a Rod and Reel. The use of sliders is excluded in SASAA National tournaments.
- e. Bait issued to an angler must remain in its original state until roll call on the following angling day. Bait issued may not be prepared prior to roll call.

B.6.4 CLOTHING, SUPPORT ITEMS AND PHYSICAL ASSISTANCE.

- a. During competition hours, every team member, of each participating Member Association, shall wear clothes that consist of a main colour, at least 80%, and a minor colour, not more than 20%.
- b. During Competition hours, every team member of each participating Member Association shall at all times, display their SASAA I.D. number on the back of their angling apparel. (Minimum Size 7 cm x 20 cm).
- c. No artificial support other than a rod bucket shall be used while playing a fish, with the exception of certified disabled members. Refer clause B.2.4
- d.
 - (i) During competition hours, no angler shall have any physical assistance with tying knots, making traces, baiting of hooks, casting, hooking or fighting a catch. Once a catch has been hooked, no person other than the angler may handle or touch the rod or main line of such angler whilst fighting the catch, and before the catch has been landed to such a degree that the catch is unable to return to the water on its own accord. Only the leader as mentioned in B.6.6 (c) below, may be handled or touched by any other person who is part of, or engaged in the tournament, whilst the angler is fighting such catch. The main line may only be touched to untangle it from another angler's line as mentioned in B.6.6 (c) below. When a catch has been landed, to minimize the time the fish is out of the water a team member may assist in the unhooking and releasing.
 - (ii) In the event where an angler, whilst fighting a fish, ends up in a situation where he/she may be in danger of drowning and where such an angler is assisted by any other person(s) in an attempt to prevent him/her from drowning or return safely to shore, then such assistance shall be deemed to be physical assistance, and the fish which was landed after such assistance was given, shall be disqualified.
- e. An angler shall be allowed to wear:
 - (i) It is compulsory for Juniors to wear floatation devices at the regional national championships.
 - (ii) A Personal Flotation Device (PFD), which device shall be deemed to be a life jacket or life belt which can only be manually inflated by an angler/team member, when such angler/team member finds him/herself in a life-threatening situation and may only be used/or inflated to save the angler from drowning or to assist another angler from drowning.
 - (iii) Manual Inflation shall mean the intentional or accidental triggering and the release of carbon dioxide gas from a canister, or by orally inflating the PFD by blowing into a flexible tube.



SASACC

SHORE ANGLING



- (iv) Any Angler/team member while in the process of fighting a catch, who inflates his/her PFD for whatever reason, shall be allowed to land his/her catch, but such catch will not qualify for any points on the angler's scorecard.
- (v) Any angler/team member who inflated his PFD for whatever reason, shall only be allowed to continue angling after he/she has removed his/her PFD or has deflated such PFD to its original state. An angler/team member may place his /her rod in a rod stand while removing and/or deflating his/her PFD as described above.
- (vi) Any fish hooked by an angler / team member while wearing an inflated PFD, shall be disqualified and shall not count for any points on the angler's scorecard.
- (vii) No angler/team member may use his/her PFD to assist him/her to gain an unfair advantage over other anglers/team members in the same competition.
- (viii) A PFD shall not be sewn into, or form part of an angler's/member's clothing and shall at all times be a separate device which will only be attached to the angler by means of a belt or harness.

B.6.5 HOOKED FISH ASPECTS.

- a. Should two anglers hook and land the same catch, the catch shall be allocated to the angler whose hook is embedded in the mouth of the catch.
- b. Should both anglers' hooks be embedded in the mouth, the catch shall count for neither angler.
- c. Any tagged catch landed again, on the same day shall only be eligible for points if hooked in the mouth.
- d. Any mutilated catch, unable to be measured accurately, shall be weighed on an approved scale by an accredited weigh official.
- e. Any catch hooked prior to the official expiry time of a competition day and landed within the maximum extension period of four (4) hours, shall be eligible to score providing an accredited weigh official has been notified.
- f. Par B.6.4(e) (v) shall apply in this instance.

B.6.6 LANDING OF FISH.

- a. No gaffing or tail roping will be permitted to land a catch.
- b. Should a catch unhook or an angler's line part whilst fighting a catch, then any other person(s) participating in the tournament, may grab the catch and assist in the landing of such catch.
- c. When grabbing a catch for another angler, the assisting angler may only handle the shock leader, which shall not exceed nine (9) meters in length when extended. The length of the shock leader shall be the overall length from where the leader is attached to the main line by means of a knot, to the point where the bottom hook is attached to the hook trace. The main line, however, may not be touched, except when untangling the line from another anglers line.
- d. A catch that dislodges during or after landing, and has not been measured, will be declared lost when the angler resumes angling.

B.7 MEASURING OF CATCHES.

- 1. All measuring tapes must be of good quality and must exceed the length of the catch being measured and be approved by the Senior Official.
- 2. The team management and anglers, excluding guides, of each participating Member Association will be entitled to measure and witness catches of opposing teams only. It is all participants (team management, anglers, weigh officials and guides) collective duty and responsibility to ensure that all catches are measured, recorded, (possibly) tagged and returned to sea with the minimum delay, trauma or injury.
- 3. Incidents of poor handling or gaffing techniques shall be reported at the following Captain's/Managers meeting.



SASACC



SHORE ANGLING



B.8 OBJECTIONS AND COMPLAINTS.

1. The tournament Action Committee must see to it that all the above rules are adhered to.
2. If any angler (and/or team) is found transgressing any of the above rules, by the Championship Coordinator, a member of the Action Committee (ex officio), or officially reported by a participating angler, the transgression shall be reported prior to closure of scales for the particular day. The Championship Coordinator and the Action Committee shall refer the issue for discussion during the same evening. The decision of this Committee regarding penalties will be final and binding. The maximum penalty shall be that the team's entire catch for the day is disqualified.
3. All objections and complaints, excluding the Championship Coordinator and the Action Committee must be in writing, detailing the nature of the objection or complaint, and countersigned by the Captain and Manager of the team lodging the objection or complaint. The objection or complaint must be submitted to the Championship Coordinator, together with a deposit of R 500.00. If the objection or complaint is overruled, the deposit will be forfeited to SASAA. If the objection is upheld, the deposit will be refunded to the complainant.

B.9 TROPHIES.

1. All Trophies, present and future, shall remain the sole property of SASAA, and shall be competed for in accordance with conditions as stipulated by SASAA.
2. All Trophies are available for competition between Member Associations.
3. The Member Association representing the winning individual or team shall be held accountable for floating trophies awarded to its teams/ individuals. Trophies shall be engraved and returned to the Championship Coordinator at the Captains/managers meeting, prior to commencement of the next Championship.



SASACC



SHORE ANGLING





SHORE ANGLING TEAM SELECTION SYSTEM.

C.1 SELECTION COMMITTEES.

- a. Divisional selection committees shall be elected at the Annual Divisional Meetings (ADM). Eligible candidates from the ranks of team management who are attending the championship, must be nominated in writing by any Association. Nominations to reach the Divisional Secretary before the stipulated date. To qualify, nominees for the Senior A, Masters and Ladies Divisions, must have been awarded Protea or President A colours, while nominations from all other divisions must have at least 3 years championship experience.
The selection committee shall comprise:
 - i. A convener of selectors who shall chair the selection committee meeting. In the event of nominations for convener not being received prior to the ADM, nominations may be called from the floor at the ADM. If no nominations are received from the floor, then the SASAA representative must fulfil this position.
 - ii. Three (3) or five (5) selectors.
- b. No Member Association shall have more than one (1) of its individual members represented on the Selection Committee. This does not apply to the convener of selectors.
- c. Selection Committee members may not be nominees for a team to be selected, except for Managers or Captains.
- d. For the Selection Committee to proceed with its activities, a quorum of all the selectors and the convener is required. Should any of the Selectors not be present or available at the time, the Chairman shall co-opt a suitable substitute that qualifies in accordance with the requirements of Clause C.1 (a) and (b) above.
- e. Nominations for Managers and Captains must be submitted in writing to the Divisional Secretary. A minimum of 2 nominations for each position will be required. In the event of the minimum requirement not being met, the Divisional Chairperson shall call for additional nominations at the A.D.M.
- f. Nominations for Managers for Protea teams will be called for by the Secretary of SASAA and appointed by the Executive Committee, as and when required.
- g. The selection of members for the National team is subject to the provision that each nominee must have participated in the more recent and at least in one (1) of the previous two (2) National Championships. Protea managers are excluded from this proviso as they are selected by the Excom.
- h. The selectors will select the teams and a 1st, 2nd, 3rd and 4th reserves, (reserve names and position will not be announced and remain confidential) for each team. The Convener will forward the complete team list to the SASAA Secretary, the President, and relevant Divisional Chairpersons.
- i. Despite team announcement at the prize giving all teams will be distributed to all Associations on a SASAA letterhead signed by the Secretary, the President, or their nominee.
- j. Should there be a withdrawal/s the Convener of selectors will request in writing the availability from the next eligible reserve/s, inform the Divisional Chairperson and the SASAA Secretary the name of the new team member/s and clause C1.i will apply in addition to the new team member.
- k. Should all reserve names be depleted the Convener of Selectors will convene a selectors tele-conference meeting and same selection procedure will apply.



SASACC



SHORE ANGLING



C.2 SELECTION CRITERIA

- C.2.1** It is the primary responsibility of the selection panel (the panel) to select the best eligible anglers for the Protea and SASAA President and Inland teams in terms of the protocol set out hereunder and without regard for personal prejudice or affiliation.
- C.2.2** To qualify for selection an angler must have consistently abided by SASCOC's Code of Conduct during the 3 years prior to team selections:
- C.2.2.1 Respect the rules and play in the spirit of the game.
 - C.2.2.2 Display high standards of behaviour that promote a positive image for the game.
 - C.2.2.3 Respect the opponents.
 - C.2.2.4 Respect the officials and their decisions.
 - C.2.2.5 Be gracious in victory and defeat.
 - C.2.2.6 Give team-mates positive inputs and feedback.
 - C.2.2.7 Compete fairly.
 - C.2.2.8 Refrain from the use of profane, insulting, harassing or otherwise offensive language or behaviour on or off the field.
 - C.2.2.9 Maintain a sense of self-control and dignity at all times.
 - C.2.2.10 Thank officials and opposing teams after every game/match.
 - C.2.2.11 Maintain a sense of integrity.
 - C.2.2.12 Respect the facilities/equipment.
 - C.2.2.13 Be a true team player.
 - C.2.2.14 Reject corruption, drugs, racism, violence, and other dangers to the sport; and
 - C.2.2.15 Denounce those who attempt to discredit the sport.
- C.2.3** The 3-year ranking system will serve as the primary indication of angler merit and should be used as guidance for selectors to identify a subgroup of anglers to be considered for selection. Together with the 3year ranking system, the selectors shall also consider, but not be limited to the following aspects:
- The angler's ability to cast.
 - The angler's ability to wade.
 - The angler's physical strength and fitness.
 - The angler's work rate during the competition.
 - The angler's ability to adjust to variable/changing angling conditions.
 - The angler's bait presentation and the use of correct traces.

a) 3-year ranking.

The following Divisions will be ranked on 3 years accumulative points on the 50/30/20 basis:

- | | | | |
|-----|---------------|---|---|
| i | Junior u/21 | - | Points accrued in U/16 will be carried forward.
Ranking will be calculated as stated in C.2.4 below. |
| ii | Senior A | - | Ranking will be calculated as stated in C.2.4 below. |
| iii | Ladies | - | Ranking will be calculated as stated in C.2.4 below. |
| iv | Grand Masters | - | Only points accrued in Grand Masters Division will be considered. |
| v | Senior B | - | Ranking will be calculated as stated in C.2.4 below. |



b) 2-year ranking: Junior u/16.

The Junior u/16 Division will be ranked on 2-year accumulative points on a 60/40 basis.

The individual ranking of an angler will be calculated as follows:

The maximum rank points that can be awarded for any particular year's competition is 100 points. Each angling day is awarded a percentage of the 100 points, based on total weight points for that day divided by total weight points over the 3 days. The angler that scores the highest weight points for that day is awarded the maximum rank points awarded for that day. All other anglers receive a percentage of the top angler's rank points for that day based on their weight points as a percentage of the top anglers. The total rank points of an angler for any year will be determined by the sum of the rank points over the 3 competition days. The overall rank of an angler for selection purposes is determined as the sum of the ranking positions of the angler over the past 2 years on a 60/40 basis. Anglers will be ranked according to their aggregate ranking positions as set out above (from least to most).

Anglers in this division will only be eligible for selection in his/her second year of participation.

The top angler over the above 2 years, and who have fished in both of the 2 years in question, shall be an automatic selection in the u/16 Protea side.

c) 1-year ranking: Development.

The Development Division will be ranked on 1-year points at the present tournament.

Rank will be carried through to the B Division.

d) 2-year ranking: Masters.

1. Only points accrued in master's Division will be considered.

2. The Masters Division will be ranked on 2-year accumulative points on a 60/40 basis.

3. The individual ranking of an angler will be calculated as follows:

The maximum rank points that can be awarded for any particular year's competition is 100 points. Each angling day is awarded a percentage of the 100 points, based on total weight points for that day divided by total weight points over the 3 days. The angler that scores the highest weight points for that day is awarded the maximum rank points for that day. All other anglers receive a percentage of the top angler's rank points for that day based on their weight points as a percentage of the top anglers. The total rank points of an angler for any year will be determined by the sum of the rank points over the 3 competition days. The overall rank of an angler for selection purposes is determined as the sum of the ranking positions of the angler over the past 2 years on a 60/40 basis. Anglers will be ranked according to their aggregate ranking positions as set out above (from least to most).

C.2.4 The individual ranking of an angler will be calculated as follows:

The maximum rank points that can be awarded for any particular year's competition is 100 points. Each angling day is awarded a percentage of the 100 points, based on total weight points for that day divided by total weight points over the four days. The angler that scores the highest weight points for that day is awarded the maximum rank points awarded for that day. All other anglers receive a percentage of the top anglers rank points for that day based on their weight points as a percentage of the top anglers'. The total rank points of an angler for any year will be determined by the sum of the rank points over the four (4) competition days, or three (3) days in the event of the u/21, Ladies, and Grand Masters divisions. The overall rank of an angler for selection purposes is determined as the sum of the ranking positions of the angler over the past 3 years on a 50/30/20 basis. Anglers will be ranked according to their aggregate ranking positions as set out above (from least to most).



SASACC



SHORE ANGLING



- C.2.5** Based on the 3-year ranking, a subgroup of the 21 top-ranked anglers (Senior A, Masters & Ladies) will be eligible for selection to the Protea and President sides. In addition to the above group of 21, the 3 top ranked available POC's from the Senior A, Masters and Ladies Divisions shall be included to be considered for selection, of which one (1) must be selected in the Protea team.
The reserve selected for the Protea side will 'automatically' be selected to the President Side.
For all other divisions (Senior B, Grand Masters, u/21 & u/16) the sub group will consist of the 12 top ranked anglers. In addition to the subgroup of 12 anglers in both the u/16 & u/21 Divisions, the top 3 ranked available POC's in both (u/16 & u/21) divisions, shall be included in the pool of anglers to be considered for selection. In both (u/16 & u/21) divisions at least one (1) POC must be included in the Protea team.
- C.2.6** (i) In the Senior A Division and the Ladies Division, anglers shall only qualify for selection to the respective Protea teams, after first being selected to, and having competed in, the Senior A or Ladies Presidents teams in at least 1 (one) previous tournament.
(ii) In the Masters Division, all anglers who have previously been selected to, and having competed in at least one(1), Senior A Protea, Senior A President's, SA Masters or SA Masters President's teams, shall qualify for Masters Protea colours. All other anglers shall first have to be selected to the Masters Presidents side and having competed in such tournament at least 1(one) previous year, before qualifying for selection to the Masters Protea team.
(iii) In the interest of transparency and to affirm SASAA's commitment to the validity of the ranking system, the top 3 eligible anglers should be regarded as automatic selection for the Protea Senior A, Masters, Ladies, Junior u/21 and the SA Grand Masters teams, but subject to the provisions of Sec(s) C.2.6 (i) and (ii) above in respect of the Senior A, Ladies and Masters teams.
- C.2.7** The President Inland team of seven (7) anglers is to be selected from the 12 top ranked (over 3 years), eligible Inland anglers, ensuring automatic selection for the top 7.
- C.2.8** Supplemental to the ranked anglers, the following information should be available to the selection panel as standard issue:
(a) The individual performance of the pool of anglers to be considered for selection for each of the 3 years, i.e. where each individual angler ended each of the proceeding 3 years' tournaments on individual standing (for example 7th, 19th and 3rd);
(b) Details of catches over the previous 3 years; and
(c) Any additional information as identified by the selectors.
- C.2.9** Anglers must have fished the present and at least 1 out of the previous 2 National tournaments to qualify for selection for the division in which they competed.
- C.2.10** The above selections are at the selector's discretion and should be fully discussed and then put to a vote. The outcome of the vote is determined by a simple majority and, only in the case of a split vote, does the convener have a casting vote.
- C.2.11** The selectors will also select a Captain to represent the Protea side. The team managers of the Protea sides will be selected by the SASAA Executive Committee prior to the selection process.
- C.2.12** Associations that suspect that adherence to the Protocol, or any other Constitutional regulation, has been neglected or breached, will have the Right to Appeal.



SASACC



SHORE ANGLING



C.2.13 Appeal Process:

- (a) Associations may lodge written appeals, with the secretary of SASAA within seven (7) days from the date of team announcement.
- (b) The Appeal should clearly state/include:
 - The name/names and number/numbers of the individual/individuals alleged to have been disadvantaged.
 - Specific details as to which section/sections of the Protocol or Constitution has not been adhered to.
 - Lodge a deposit of R500.00 to the Treasurer of SASAA; and
 - Should the Appeal be upheld the deposit will be returned to the Association(s).

C.2.14 Appeal Adjudication:

- (a) The Executive Committee shall adjudicate all Appeals.
- (b) Consult with the Convener of the relevant Selection Committee.
- (c) Consult with relevant individual selectors, if required.
- (d) The final ruling, reflecting all relevant evidence, shall be communicated in writing to all Associations; and
- (e) The decision of the Executive Committee shall be final and binding.

C.2.15 In the event of incorrect or insufficient information being available to the selectors at the time of selecting any of the above teams, SASAA through its Executive Committee retains the right to make changes to selections after the fact. SASAA also retains the right to postpone the selection process should circumstances warrants such action. Should changes to selections or postponement of the selection process be required, SASAA will endeavour to communicate the rationale for such actions to its member associations and the individual anglers.

C.2.16 An angler who was part of the sub-group of anglers to be considered for team selection, and who was not selected, shall have the right, in terms of the PAJA Act (Bylaw J) to request reasons for his/her non-selection, to enable him/her to improve his/her angling skills or personal development in angling, in order to be considered for future team selection. The request for information must be done in writing and submitted to the SASAA Secretary within twenty-one (21) days from the team announcement at the Prizegiving.

C3. TEAM ANNOUNCEMENTS.

The announcement of the respective SASAA National and/or Invitational Teams shall be made annually during the prize giving function of the specific Division's National Championship event.

C4. SPECIFIC SELECTION NOTES.

- 1) Selector's criteria must be published in the tournament booklet, the ADM agenda and the SASAA representative must distribute a hard copy to the selection committee after the ADM.
- 2) The Protea (Senior A, Masters, Ladies, u/21 & u/16) and the SA Grand Masters teams selected after conclusion of the respective Divisional Championships, shall consist of a maximum of 7 anglers, a Team Manager and or a Captain. Only the total points scored by the top six (6) anglers for these teams will be eligible as team points at the completion of the tournament.
- 3) The President (Senior A, Senior B, Senior Inland, Ladies, Masters & Development) teams, shall consist of a maximum of 7 anglers and a Team Manager. Only the total points scored by the top six (6) anglers for these teams will be eligible as team points at the completion of the tournament.
- 4) Loan Anglers from Coastal Associations shall not be eligible for selection of the President Inland team but will still be allowed to retain their ranking/points obtained at any National tournament.
- 5) The regularity of the selection of the Protea teams shall entirely depend on:
 - i) The availability of tournaments; and
 - ii) SASCOC participation approval.



SASACC



SHORE ANGLING



CONTINGENCY PLAN

SOUTH AFRICAN SHORE ANGLING ASSOCIATION 2023 SENIOR A CHAMPIONSHIP

PARTICIPATING ASSOCIATIONS:	<ol style="list-style-type: none"> 1. BOLAND 2. BORDER 3. CENTRAL GAUTENG 4. EASTERN PROVINCE 5. EDEN 6. FREE STATE 7. GAUTENG NORTH 8. KWAZULU NATAL COAST 9. KWAZULU NATAL INLAND 10. WEST COAST 11. WESTERN CAPE 12. ZULULAND
------------------------------------	--

HOST CITY / TOWN: PORT ELIZABETH / JEFFREYS BAY.

PROPOSED AREAS: VAN DER RIETS, GAMTOOS,
KABELJOUS, PARADISE.

PERIOD: 20th to 24th FEBRUARY 2023.

TABLE OF CONTENTS:

1. INTRODUCTION
2. OBJECTIVE
3. KEY SUCCESS ELEMENTS
4. TOURNAMENT PROGRAM
5. RISK ANALYSIS
6. SECURITY
7. EMERGENCIES
8. DISASTER MANAGEMENT TEAM
9. PLAN DISTRIBUTION
10. ORIENTATION
11. CONCLUSION



SASACC



SHORE ANGLING



1. INTRODUCTION:

The Eastern Province Shore Angling Association will be hosting a Championship Shore Angling Tournament in the surroundings of Port Elizabeth and Kouga from 20th to 24th February 2023.

Twelve teams totalling 180 anglers, guides, coaches and managers from the above-mentioned associations will be participating in the competition and all participants will be based in and around Jeffrey's Bay.

All functions and related activities will take place in Jeffrey's Bay for the full duration of the tournament.

2. OBJECTIVE:

The objective of the Contingency Plan is to reduce the risk of any foreseeable Safety and Security hazards which may arise during the engagement period and to ensure that adequate preventative and reactive measures are in place, should any emergency situation occur.

3. KEY SUCCESS ELEMENTS:

- Single Plan for Event Safety and Security
- Clearly defined areas of responsibility & Authority
- Full control and consistency
- Single Communication Network Centre with quick reaction capability.
- Partnership with emergency Services:
 - SAPS
 - AMBULANCE SERVICES
 - SEA RESCUE
 - HOSPITALS
 - FIRE DEPARTMENT
 - TRAFFIC POLICE
 - BREAKDOWN SERVICES



SASACC



SHORE ANGLING



4. TOURNAMENT PROGRAM:

- Refer page 5 of this booklet.

5. RISK ANALYSIS:

5.1: Positive considerations: (Angling venues)

- All the areas to be fished are recognised as suitable shore angling venues. All with the exception of the Van der Riets venue, form part of the Nelson Mandela Bay and Kouga Municipal structures.
- Excellent & Safe fishing areas – Normal care to be taken to avoid rip currents and unsafe wading practices.
- Good accessible road systems.
- Strict Competition Rules to prevent dangerous practices.
- Officials and management cover the entire area in use and are able to respond in double quick time to any emergency.
- Two trained Life-guards with first-aid equipment will be on duty for the duration of the tournament on all angling days.

5.2: Unrest:

- There are no indications of unrest, political instability or actions directed at disrupting services planned for this period.

NOTE: TOURNAMENT HAS BEEN CLASSIFIED AS A LOW-RISK EVENT.

6. SECURITY:

6.1: Task:

ADT will be the primary Private Security Provider & will strive to:

- Ensuring a safe & secure operating venue for all participants and attendants and in the case of any emergency, to act in a professional manner to minimize the risk of injury or harm to all participants by means of the following actions:
 - The professional execution of a well-structured operational plan.
 - Interaction & cooperation with all agencies involved.
 - Striving towards proactive Incident Prevention as well as controlled response to incidents.



SASACC



SHORE ANGLING



6.2: Concept of Operation:

Accommodation / Fishing Venue

- Safeguarding of all areas at venues.
- Identify and report any misbehaviour.
- Patrol, Monitoring & securing of all areas.
- Respond to reported incidents.
- Random vehicle patrols.

6.3: Operational Commander:

- Name: Shawn Swiegelaar
- Company: ADT
- Cell: 082 888 5300
- Phone: 041 393 3204

6.4: Venue Operational Command Centre (VOC):

- The VOC under **ADT** will be the centre where all security and emergency operations will be coordinated from.
- The centre is situated at 48 Da Gama Street, Jeffrey's Bay.
- All instructions – actions will be sanctioned by the EPSAA Convener and where possible in conjunction with the Disaster Management Committee.

6.5: Functions:

- Control & Coordination of Fire response Agencies
- Control & Coordination of Medical response Agencies
- Control & Coordination of SAPS response Agencies
- Control & Coordination of Sea rescue response
- Control & Coordination of Traffic Police Agencies
- Control & Coordination of Vehicle Breakdown Agencies

7. EMERGENCIES:

(The following will be considered):

- **FIRE**
- **BOMB SCARE**
- **ROBBERY / ASSAULT**
- **SERIOUS INJURIES / ILLNESSES**
- **EMERGENCY SITUATION – POSSIBLE LIFE SAVING/NEAR DROWNING.**



SASACC



SHORE ANGLING



7.1: Fire:

- In the event of a fire the Fire Department will be called by **ADT**.
- Equipment on the premises will be used by trained personnel, until such time as the Fire Brigade arrives and takes control.
- If necessary, the EPSAA Convener will instruct participants to evacuate to a predetermined area.

7.2: Bomb Scare:

- In the event of a bomb Scare, the EPSAA Convener or the Security Manager will evacuate the area immediately & **ADT** will call on the SAPS - SPECIALIST who will take control of the situation.

7.3: Robbery / Assault:

- In the event of any incident of robbery or assault, the EPSAA Convener or Security Manager will decide on the action to be taken, which could include the call for assistance from SAPS or medical support.

7.4: Serious Injury / Illness

- Serious injuries or illnesses may occur as a result of an accident, serious medical condition, (i.e. heart attack), or an unfortunate incident at the fishing venue (i.e. shark attack or near drowning).
- In the event of any of the above-mentioned incidents, the EPSAA Convener or person appointed to deal with emergencies on the beach, will take control of the situation and initiate the appropriate action.
- One qualified Lifeguard/Paramedic will be on duty and will be the first line of action during any of these emergencies.
- The patient/s will be stabilised until further assistance arrives.

8: DISASTER MANAGEMENT TEAM:

NAME	ORGANIZATION / DESIGNATION:	CONTACT NO:
ANDRE STEVENS	EPSAA CONVENER	084 422 7256
DUTY OFFICER	ADT – JEFFREYS BAY	086 121 2250
	FIRE DEPARTMENT – JEFFREYS BAY	042 291 0250
	SAPS – JEFFREYS BAY	042 200 6800
	NSRI – JEFFREYS BAY	079 916 0390
	POLICLINIC – JEFFREYS BAY	042 293 2000
	AMBULANCE SERVICE - JEFFREYS BAY	042 291 0749
	NSRI – PORT ELIZABETH	082 990 5970
	AMBULANCE SERVICE – PORT ELIZABETH	079 119 0109



SASACC



SHORE ANGLING



9: PLAN DISTRIBUTION:

- This Plan, with contact details of all the role players will be distributed to all Disaster Management Committee Members, their offices as well as the participating Managers.

10: ORIENTATION:

- Role players' confirmation of commitment for the various responsibilities has been obtained and they are fully informed about this event.

11: CONCLUSION:

- SASAA and Eastern Province have no reason to doubt the professional and wholehearted commitment of all the role players in this regard and is confident that the Eastern Cape Region is an excellent destination to host this prestigious National Event in a safe and beautiful environment.



Andre Stevens
SASAA - Secretary

Date: 6th February 2023

